

MEMO

To: Staff, Professional Staff, Learners, and Volunteers

From: Ryan Sears, Director, Capital & Facility Services

Date: December 2, 2025

RE: Start of Construction - ED Triage Area Renovations

Dear Team,

As you are aware, our Emergency Department (ED) is one of the busiest in Canada. To enhance our capacity and efficiency, we're excited to share that construction is now underway. This renovation will focus on expanding administrative areas and improving the registration and triage zones at the ED entrance. This upgrade aims to streamline patient entry and flow, enhance staff safety, and create a more accessible and flexible triage environment, while supporting TBRHSC's broader goal of a dedicated Mental Health Emergency Support Area (MHESA) internal to the ED that will follow as a separate project. This project will be executed in three main phases, please refer to the attached diagrams.

Throughout all phases, public and staff access to Emergency Department Triage, Labour & Delivery, and access to the Emergency Department will remain open and accessible.

Mobilization for construction will begin the week of December 1, 2025. Work will continue until the Fall of 2026 throughout the various phases. You will notice construction fencing near the entrance to Labour and Delivery and construction hoarding throughout the Emergency Department corridor – this is subject to change as the Work evolves and to support each phase.

Access to the ED will remain open and we will minimize the impacts to the extent possible. Wayfinding signage for alternate routing will be posted. For the safety of all patients, visitors, and staff, it is important that everyone adheres to construction fencing, barricades, and wayfinding signage. Access to construction areas is limited to authorized personnel only. This TBRHSC Project Team will communicate the progress and impacts as we navigate through each phase together.

Thank you for your cooperation and continued support during this important renovation project. We recognize that these changes pose challenges and we thank you for your patience and flexibility. If you have any questions or require further information, please do not hesitate to reach out.

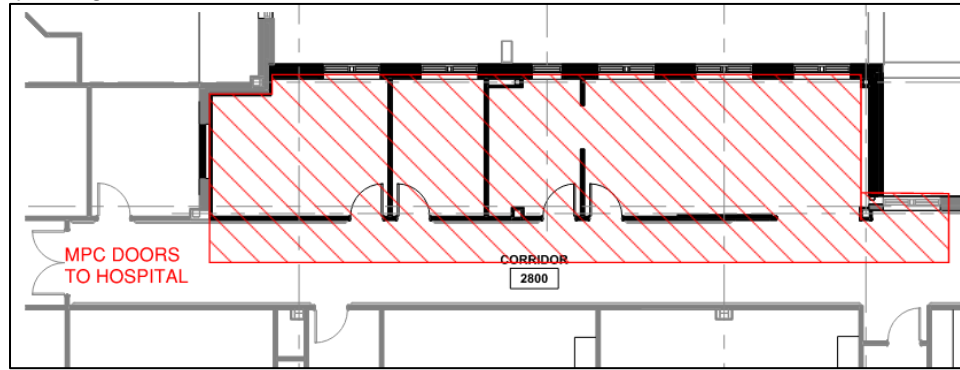
Sincerely,

Ryan Sears
Director, Capital & Facility Services

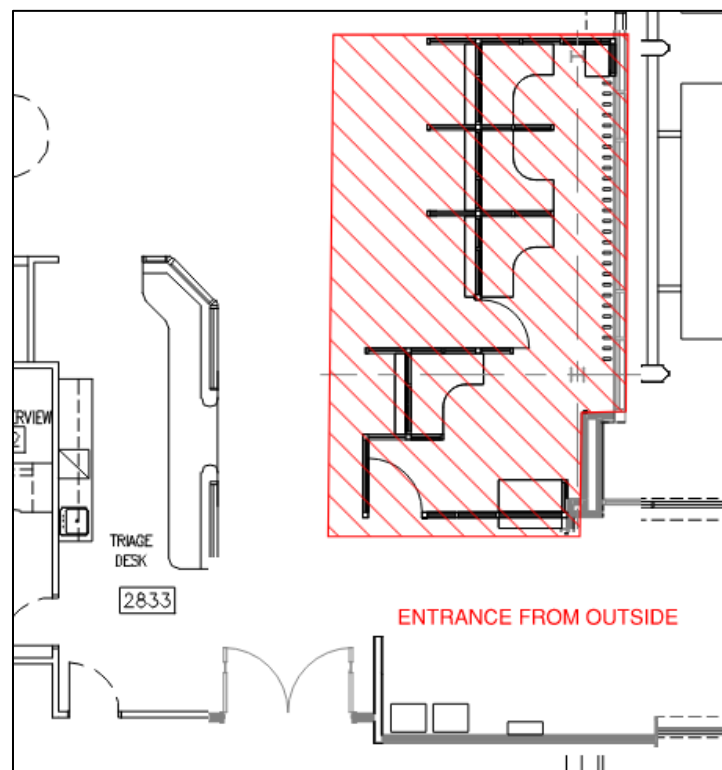
Cc: Senior Leadership, Capital & Program Development

Phased Approach: The project will be implemented in three (3) Phases:

Phase 1A: New Administration Area construction (**no impact to patients**), this will become the temporary Triage Area for Phase 2.

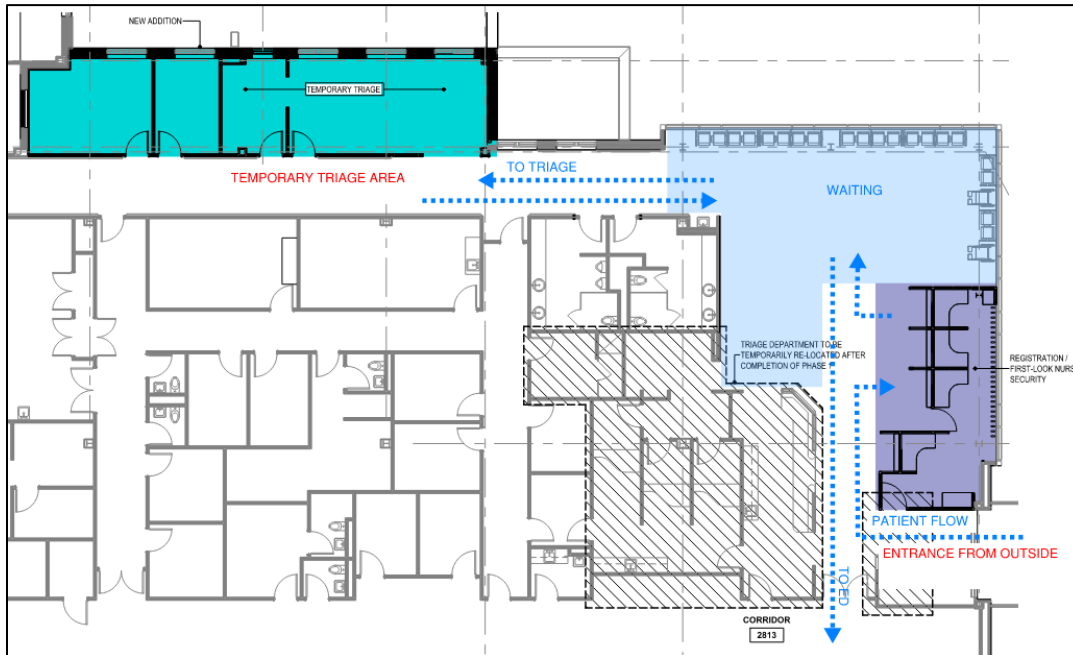


Phase 1B: New Reception, Registration and Security Area (**impact to ED Waiting area size**).



...continued on next page

Phase 2: Triage Area construction and temporary relocation of Triage to the new Administration Area (**impact to patient flow**)



Phase 3: Renovation of Administration Area to final state, including new MPC doors (**minor impact of flow to hospital from ED**).

