

Equity, Diversity, and Inclusion Steering Committee



Michelle Addison
(she/her) Director, Health Professions & Collaborative Practice



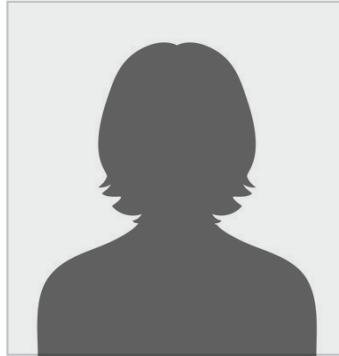
Dr. Ranjit Baboolal
Physician, Paediatrics



Amanda Bakke
(she/her) Clinical Research Intern, Thunder Bay Regional Health Research Institute



Harleen Dhillon
(she/her) Volunteer, HELP Program



Carly Forbes
(she/her) RN, Emergency



Katie Forbes
(she/her) Manager, Mat Newborn



Michelle Gale
(she/her) Radiation Therapist, Radiation Therapy



Jen Hardy
(she/her) RN, 1B - Paeds



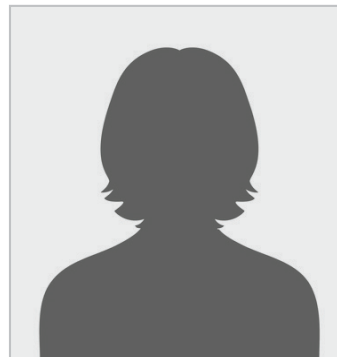
Donna Jeanpierre
(she/her) Manager, Volunteer Services



Annette Klement
(she/her) Cultural Safety Educator, Indigenous Collaboration, Equity & Inclusion



Dr. Miranda Lesperance
(she/her) Vice President, Indigenous Collaboration, Equity & Inclusion



Jessica Mitton
Clerk, Admitting



Sarah Lynne Myllyaho
(she/her) Nursing Practice Leader, Professional Practice



Cameron Picard
(he/him) Unit Care Aide / Student Nurse Nursing Resource Team



Madeline Reinikka
(she/her) Executive Assistant (acting); Human Resources Advisor (home position) Indigenous Collaboration, Equity & Inclusion



Rae-Anne Robinson
(she/her) Social Worker, Regional Bariatric Care Centre



Marina Sacchetti-Blair
(she/her) RN, PARU



Amanda Sawler
(she/her) HR Consultant, Human Resources



Shannon Schiffer
(she/her) Manager, PFCC



Rabail Siddiqui
(she/her) Research Development Coordinator (acting); Orthopaedic Research Development Officer (home position) Clinical Research Services - TBRHRI



Cheyenne Spence
RN, Emergency



Katherine Stewart
(she/her) Bioethicist, Quality & Risk Management



Laurene Stuart
(she/her) Social Worker, Renal



Summer Storm
(she/her) RN, 2C



Amanda Walberg
(she/her) Performance Improvement Consultant, Strategy and Performance Management



Raymond Zuliani
(he/him) Medical Laboratory, Assistant, Laboratory Services