

Safety Huddle

CODE GREY - Air Exclusion (EMER-10) Refresher

What are the different types of Code Grey – Air Exclusion?

Precautionary: Staff will be notified to standby for instructions.

Stage 1 - Partial Exclusion: Incident is contained/minor in nature and anticipated that it can be handled by a partial response in a short time with limited impact to hospital operations.

Stage 2 - Full Exclusion: Incident will have broader/longer impacts and most hospital operations will shut down.



What is Code Grey – Air Exclusion? Used after determining that the outside air is a danger to the people within the building, such as a large smoky fire.

*For internal release or generation of irritating substances see **Code Brown**.*

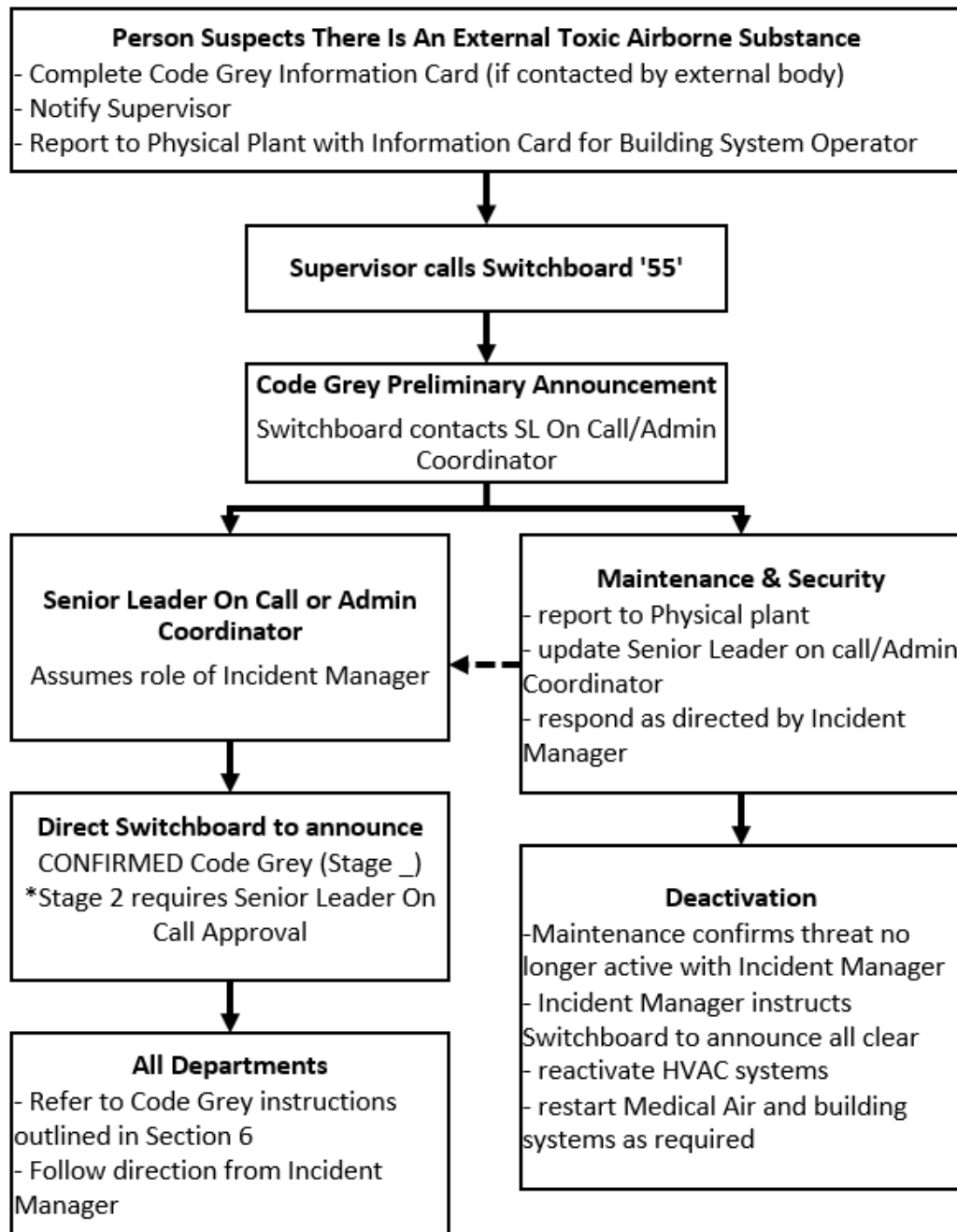
Why is Code Grey – Air Exclusion emergency planning important?

Wild fires burned more land across Ontario in 2021 than any other year on record in the province. At TBRHSC, smoke plumes from forest fires resulted in the hospital activating Code Grey-Precautionary.

We want to always be ready to respond should a similar or more intense situation occur in the future.

DYK Wildfire Season is every April to October?

Appendix 1: Code Grey Air Exclusion Algorithm



Reminders:

- If you suspect there's an external toxic airborne substance always remove yourself from harms way and report the situation to your Supervisor.
- During a Code Grey, access to and from the Hospital will be restricted to the Main Entrance (revolving door) and Emergency Department.

Check out <https://www.ontario.ca/page/forest-fires> for info about the current forest fire danger, forest fire activity, and fire restrictions across Ontario.